

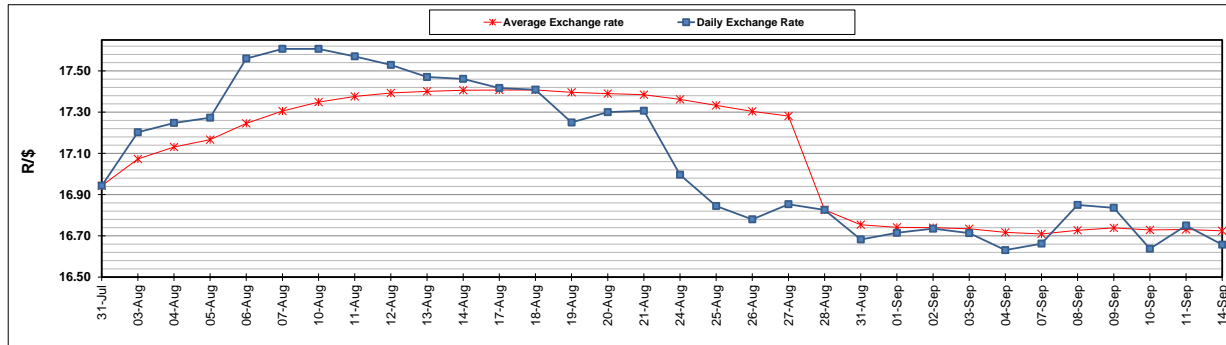
	PETROL 95 ULP	PETROL 93 ULP & LRP	DIESEL 0.05%	DIESEL 0.005%	ILL. PAR.
GAUTENG PUMP PRICE (SA c/l) AS FROM 02/09/2020	1,518.000	1,489.000	-	-	-
WHOLESALE PRICE (SA c/l) AS FROM 02/09/2020	-	-	1,327.560	1,331.960	716.828
SINGLE NATIONAL MAXIMUM RETAIL PRICE	-	-	-	-	899.000
BASIC FUEL PRICE - 14/09/2020 (SA c/l)	509.585	499.008	464.540	466.823	413.984
PRESS RELEASE CONTRIBUTION TO BFP 02/09/2020 - 14/09/2020 (SA c/l)	565.470	546.470	576.630	581.030	512.128
UNIT OVER/(UNDER) RECOVERY - 14/09/2020 (SA c/l)	55.885	47.462	112.090	114.207	98.144
AVERAGE BASIC FUEL PRICE 28/08/2020 - 14/09/2020	530.252	520.982	496.441	498.441	435.697
AVERAGE UNIT OVER/(UNDER) RECOVERY 28/08/2020 - 14/09/2020	36.293	26.563	85.439	87.840	82.931

ANALYSIS MOVEMENT OF AVERAGE OVER/(UNDER) RECOVERY

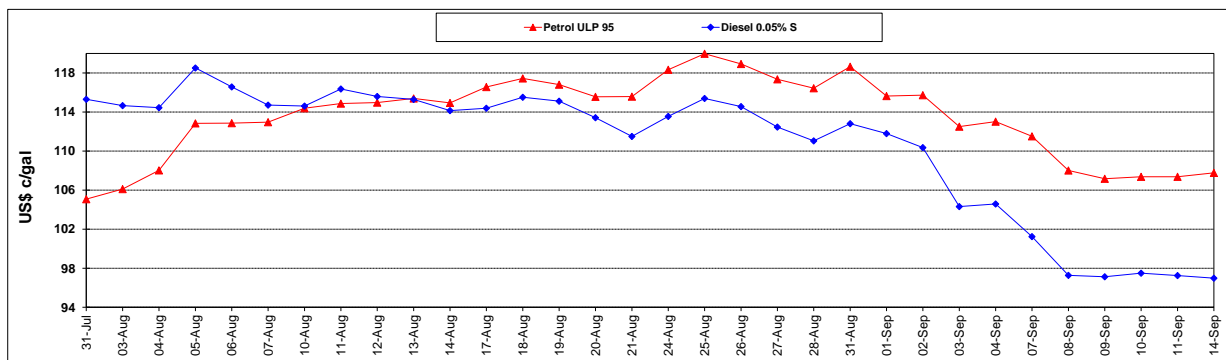
	PETROL 95	PETROL 93	DIESEL 0.05%	DIESEL 0.005%	ILL. PAR.
- MOVEMENT IN INTERNATIONAL PRODUCT PRICES	18.643	9.222	68.914	71.248	68.428
- MOVEMENT IN EXCHANGE RATE	17.650	17.341	16.525	16.591	14.503
AVERAGE UNIT OVER/(UNDER) RECOVERY 28/08/2020 - 14/09/2020	36.293	26.563	85.439	87.840	82.931

R/\$ EXCHANGE RATE - (R/\$16.6575 - 14/09/2020)

EXCHANGE RATE USED IN BASIC FUEL PRICE



INTERNATIONAL PRODUCT PRICES OF BASKET USED IN BASIC FUEL PRICE



BASIC FUEL PRICE IN SA CENTS PER LITRE

